

Census of Napoleon, Arkansas, Stampless Markings

Compiled by Francis J. Crown, Jr.

Description



Napoleon Stampless Markings (not to scale)

The different markings are identified by the 2012 *Confederate States of American (CSA) Catalog and Handbook* Stampless Type. The letters “X, Y, and Z,” are used to designate added items not in the CSA Catalog. The absence of a CSA Catalog Type in the illustrations above indicates that item is not included in the census.

Items are presented in the census in the order of the illustrations above.

This census is based on images of covers. Only covers for which an image was obtained are listed in the census. For this reason, this census may be far from complete.

NOTE: Every effort is made to ensure the accuracy of the census, but the inclusion of an item is not a guarantee of authenticity.

Count of the Napoleon Stampless Markings

Marking	Color	Type	Covers	Everett Count*
PAID + 5	Black	A	2	3
PAID + 5 revalued 10	Black	Aa	1	1
PAIE + 5	Black	X	1	--

* See “Stampless - Important Information” on Stampless Covers page for information on the Everett Count.

Notes

Legacy Marking

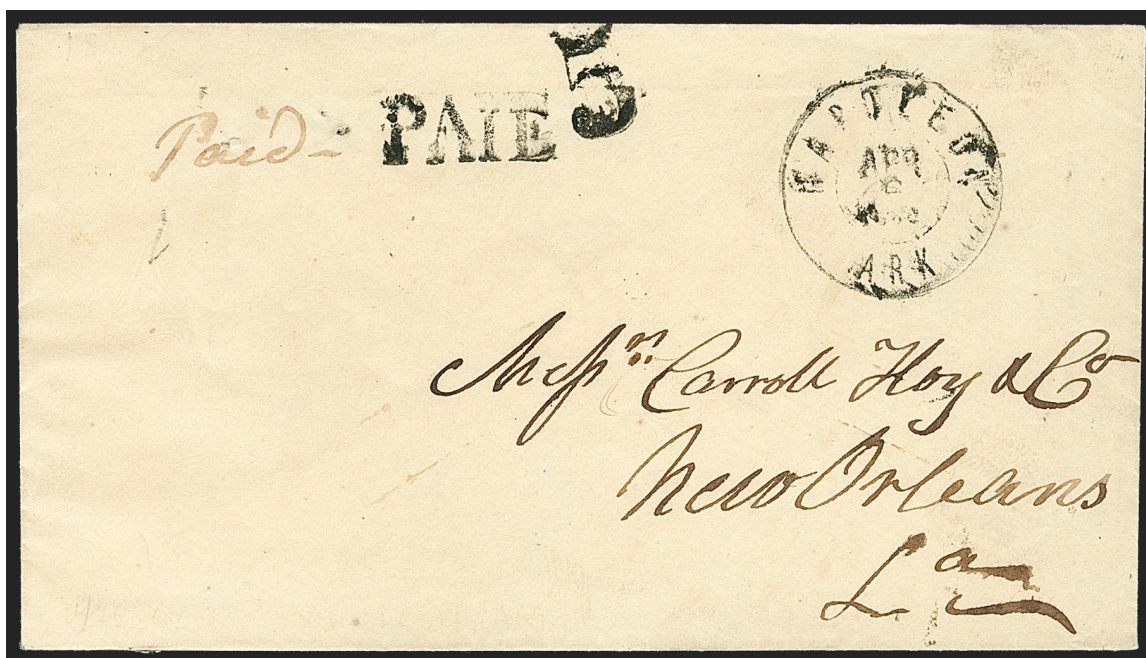
The 2012 CSA Catalog includes as a legacy listing a Type B marking (see illustration below). An example of this marking was not found in the preparation of this census.

PAID 10

Type X Marking

The Type X marking is a new listing. Instead of "PAID" the marking appears to read "PAIE" (see illustrations below).

Close examination of the marking shows that it is a double strike. This is noticed in the extra tall "PA" and the ghost of a strike above the "I E." It is possible the double strike caused the marking to appear as "PAIE." Until it is determined if the marking is a "PAID" or "PAIE" it will be listed in this census as "PAIE," Type X.



Courtesy Robert A. Siegel Auctions

Confederate Period

Confederate uses from Napoleon exist from the time Arkansas seceded from the Union on 6 May 1861 until September 1862 when Union forces occupied the town.

Reference

Roberts, Bruce, "Napoleon, Arkansas-Unlisted Misspelling 'PAIE' in CSA Stampless Rate Marking," 54:1 (January-March 2009): 13-15.

Mini Census of Napoleon, Arkansas, Stampless Covers

<u>Pmk Date</u>	<u>Address</u>	<u>PmkPos</u>	<u>PrvPos</u>	<u>CN</u>
PAID + 5, black-- Type A				
2 Jun 1861	James C. Ford Esq / Egg's Point / Mississippi	UC	UC-UR	001*
8 Dec 1861	Messrs Carroll Hoy & Co / New Orleans / La.	UL	UL-UC	002*
PAID + 5 revalued 10, black -- Type Aa				
2 Oct 1861	Mrs E M Lowell / Wades Borough / Anson Cty / N C	UL	UC	004*
PAIE + 5, black -- Type X				
6 Apr 1862	Messrs Carroll Hoy & Co / New Orleans / La.	UR	UC	003*

* Indicates a color image

Full Census of Napoleon, Arkansas, Stampless Covers

Compiled by Francis J. Crown, Jr.

PAID + 5, black-- Type A

2 Jun 1861

Description: Black "NAPOLEON / ARK" DC YD postmark UC, Type A marking UC-UR.

Address: James C. Ford Esq / Egg's Point / Mississippi

Provenance: None recorded.

Source: CONP-Jan2009(54-1)-13*; RAS-9Dec2009(980)-2887*. [001]

Image Credit: Robert A Siegel Auctions.



8 Dec 1861

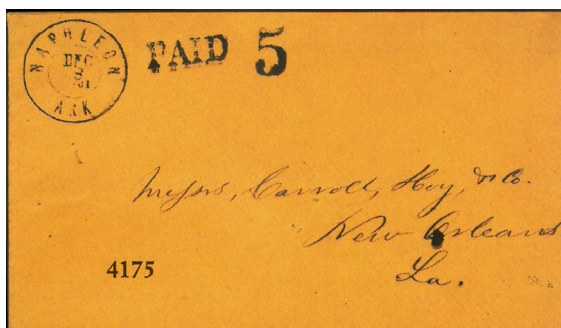
Description: Black "NAPOLEON / ARK" DC YD postmark UL, Type A marking UL-UC.

Address: Messrs Carroll Hoy & Co / New Orleans / La.

Provenance: None recorded.

Source: Private*; CONP-Jan2009(54-1)-14.tif. [002]

Image Credit: Private Collection.



PAID + 5 revalued 10, black -- Type Aa

2 Oct 1861

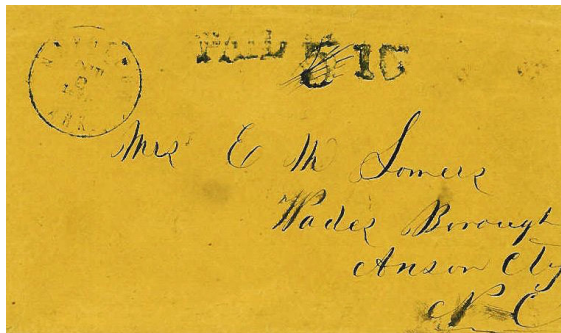
Description: Black "NAPOLEON / ARK" DC YD postmark UL, Type Aa marking UC.

Address: Mrs E M Lowell / Wades Borough / Anson Cty / N C

Provenance: None recorded.

Source: RGK-16May1985(39)-626*. [004]

Image Credit: Robert G Kaufmann Auctions.



PAIE + 5, black -- Type X

6 Apr 1862

Description: Black "NAPOLEON / ARK" DC YD postmark UR, Type X marking UC. See "Notes."

Address: Messrs Carroll Hoy & Co / New Orleans / La.

Provenance: Agre, Warren

Source: RAS-24Sep2002(850)-5106*; SR-53-4069
Warren.jpg RAS-22May2018(1182)-197*. [003]

Image Credit: Schuyler Rumsey Auctions.

